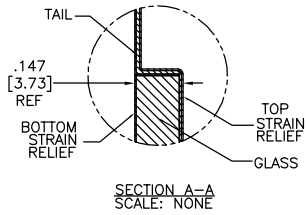


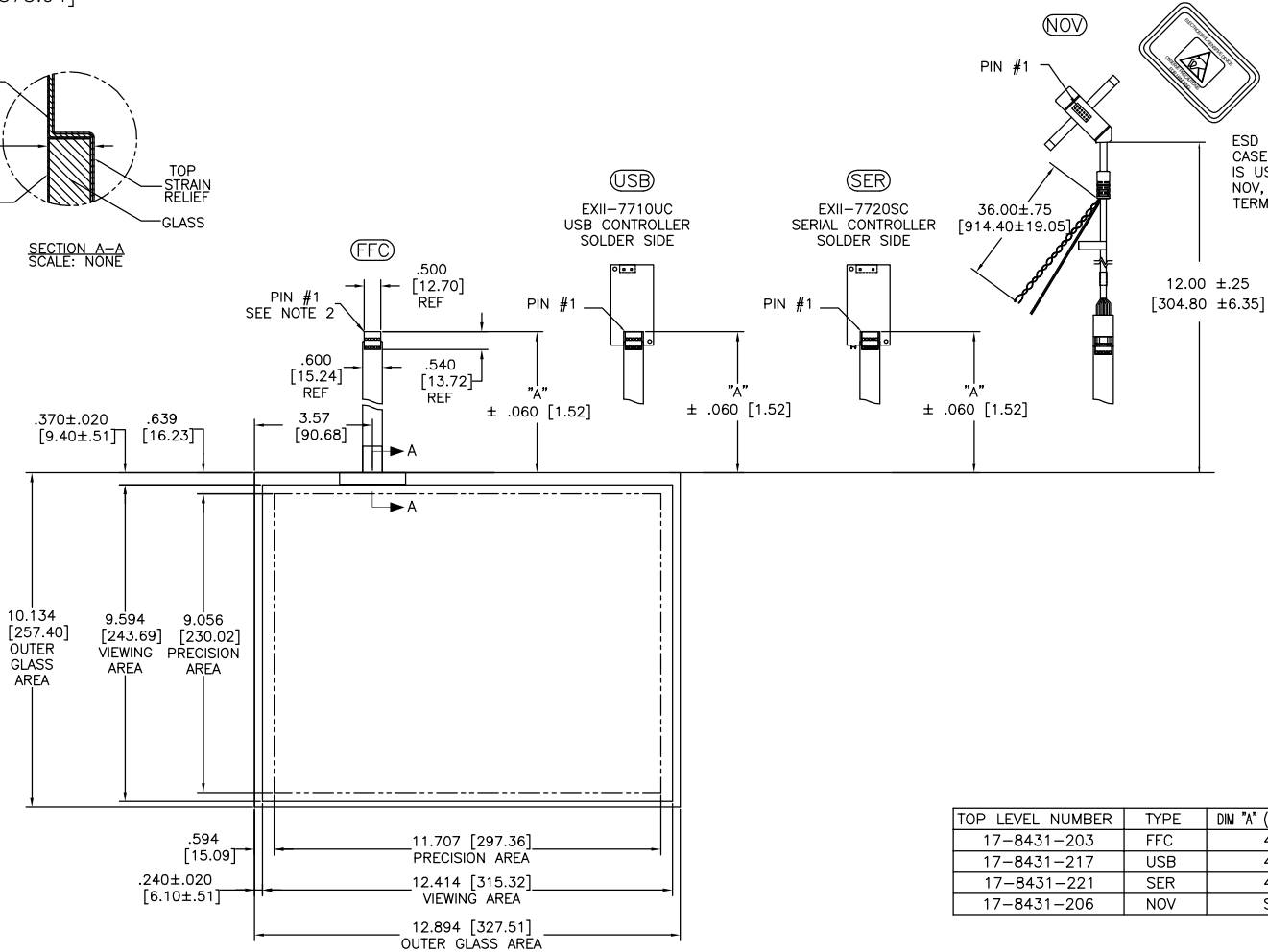
OGA DIAGONAL: 16.40 [416.55]
 VA DIAGONAL: 15.69 [398.51]
 PA DIAGONAL: 14.80 [375.94]

THIS PRODUCT IS MANUFACTURED IN ACCORDANCE WITH THE CURRENT CLEARTEK II CAPACITIVE TOUCH SCREEN SPECIFICATION (DOCUMENT 23655)



.147±.020 [3.73±.51]
 TOTAL THICKNESS OF GLASS, CABLE AND STRAIN RELIEF

.125 [3.18] REF



ESD CLAMHELL CASE IS USED WITH ALL NOV, USB AND SER TERMINATIONS.

TOP LEVEL NUMBER	TYPE	DIM "A" (TOTAL GLASS TO CONNECTOR)	A/G FINISH
17-8431-203	FFC	4.27" [108.46]	AG500
17-8431-217	USB	4.27" [108.46]	AG500
17-8431-221	SER	4.27" [108.46]	AG500
17-8431-206	NOV	SEE DWG	AG500

NOTES:

1. WEIGHT OF GLASS IN GRAMS: 642.26±10%
2. 5 PIN AMP CONNECTOR LATCH STYLE HOUSING P/N: 487526-4
 TIN CONTACTS P/N: 2-487406-4
 HOUSING ORIENTED WITH LATCH DOWN

PINOUT	
1	LL
2	UL
3	SHLD
4	UR
5	LR

UNITS	INCHES [MM]
TOLERANCES UNLESS OTHERWISE SPECIFIED	
.X	±
.XX	±.03 [.76]
.XXX	±.015 [.38]
ANGLES	±1°
THIRD ANGLE PROJECTION	
DO NOT SCALE DRAWING	
SCALE	1 = 1

	3M TOUCH SYSTEMS METHUEN, MA USA
©COPYRIGHT 2004 THIS DOCUMENT IS COPYRIGHTED PROPERTY OF THE 3M COMPANY AND MAY NOT BE REPRODUCED WITHOUT 3M WRITTEN PERMISSION OR USED OR DISCLOSED FOR OTHER THAN 3M AUTHORIZED PURPOSES.	
DRAWN	K CROWLEY 9/05
SCALE	1 = 1

REV	CHANGE NOTICE	DATE	DRW
02	REVISED PER CO 026961	2/07	ACM
01	RELEASE PER CO 021938	9/05	KAC

TITLE		MARKETING DRAWING	
		17-843X-2XX	
CAD FORMAT	AUTOCAD	SHEET	1 OF 1
SIZE	C	DOCUMENT NO.	28369-MKT
		REV	02